

Every revolution needs a pioneer.

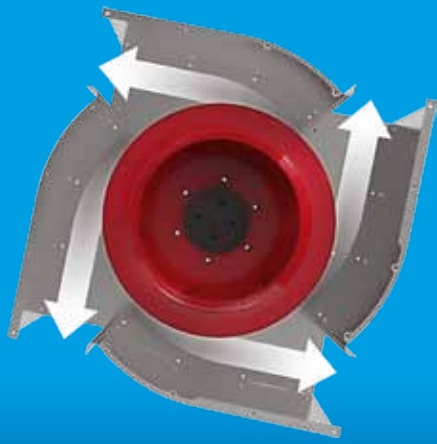
The RQM **MultiEvo.**

- exceptionally economical •
- simply compact •
- completely hygienic •



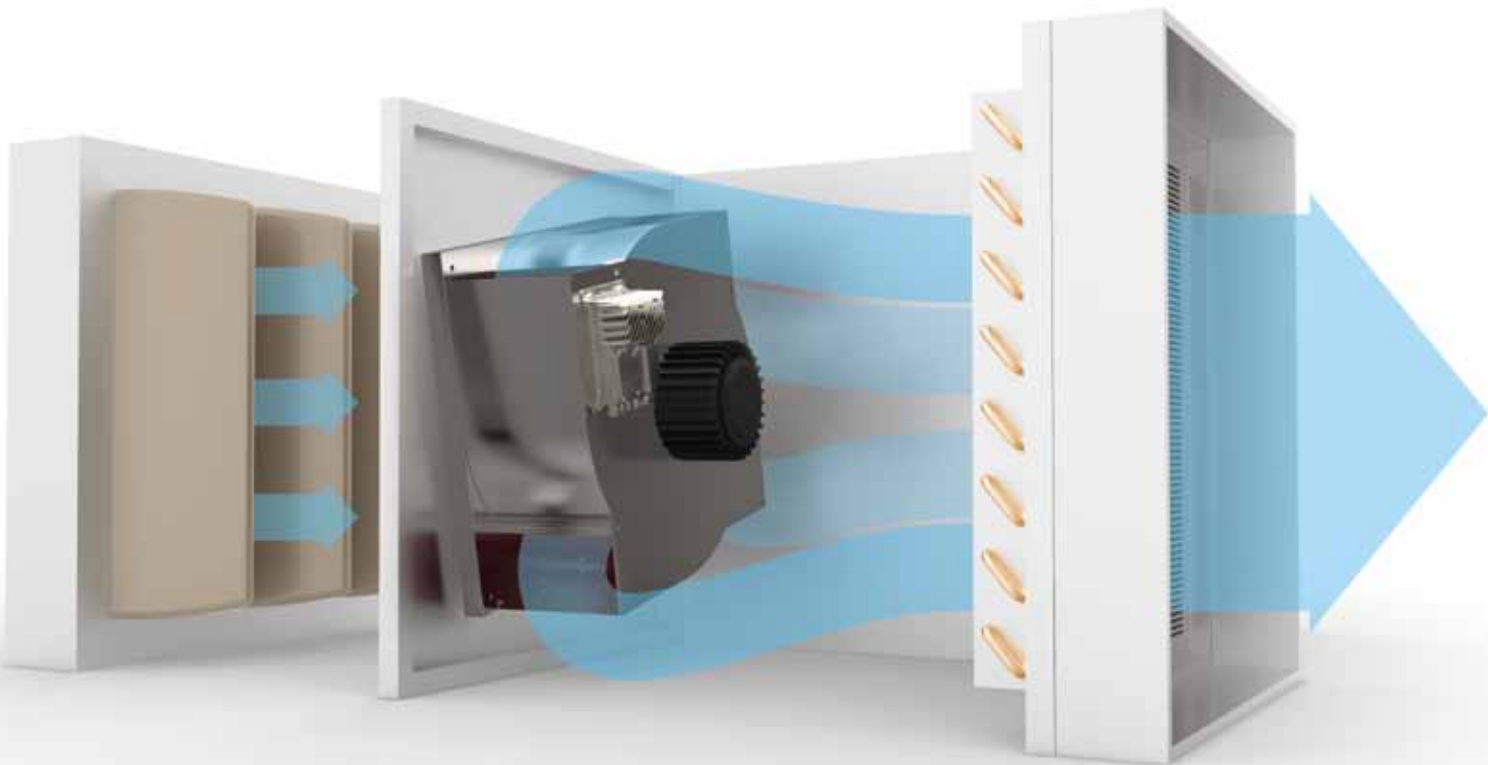
AIRTREND Ltd.
Predstavništvo u Beogradu
Kumanovska 14
11000 Beograd
Tel: 011 3836886, 3085740
Faks: 011 3444113
e-mail: gobrid@eunet.rs
web: www.airtrend.rs

NICOTRA | Gebhardt



What is MultiEvo?

The MultiEvo technology describes is a multiple discharge integrated scroll providing the highest achievable system efficiency. The combination of impeller, motor and multiple scroll delivers unparalleled energy efficiency. A hybrid revolution.



Hybrid is the future.

The new RQM MultiEvo combines the compact design of plug fans with the benefits of traditional cased fans. In principle, it is a directly driven centrifugal fan with spiral shaped guide vanes. The unique design of the multiple discharge scroll far exceeds the efficiency levels of conventional EC plug fans.

For climate control and ventilation

The RQM MultiEvo is ideally suited for both new equipment and retrofit and delivers lowest possible lifetime costs.

- Plug and play installation
- Retrofit: Modernize and save

Applications

- Air Handling Units
- Data centres, Clean Rooms, Commercial buildings, Refurbishment

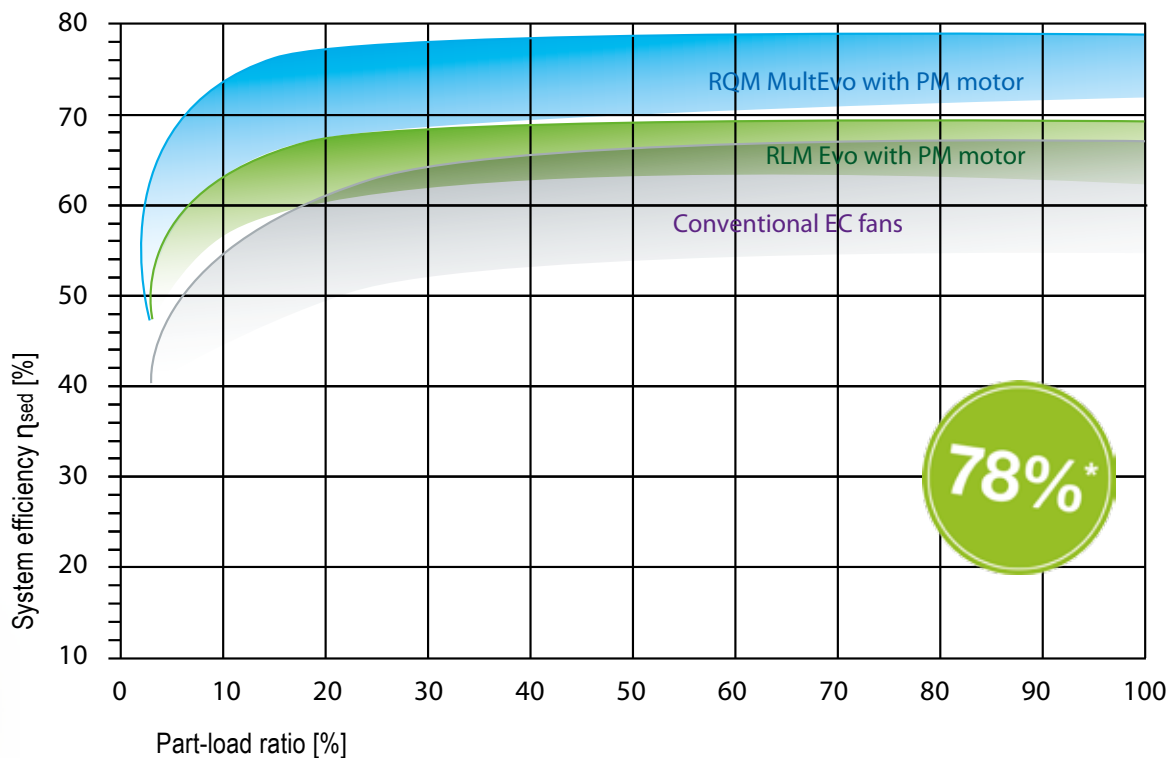
The RQM MultiEvo is also particularly well suited for creating multiple fan configurations within a common plenum.

Benchmark – up to 78 % system efficiency

The RQM MultiEvo achieves up to 15% higher efficiency than the market leading EC plug fan (RLM-Evo). The measured system efficiency levels reach values of up to 78% (system = fan, motor and drive).

And: Depending upon the duty point, the noise levels of the RQM MultiEvo are up to 4dB lower than conventional EC plug fans.

Here is the proof – go to ILK Dresden's independent test report. www.rqm-multievo.com



*System efficiency up to 78 % depending on the fan size.

Advantages of the RQM MultiEvo

Economical

The outstanding efficiency levels makes it possible to reach the optimal duty point of a system with a lower motor power rating or even a smaller fan. Just plug in and switch on. Each system solution comes parameterized and ready for operation – including a prior functional test and test run. That saves time and money.

Compact

Horizontal or vertical: Install the RQM MultiEvo with integrated electronics directly to the floor, wall or ceiling – without having to install the inverter separately outside of the system. An unshielded power supply cable is required for the connection. The plug and play design keeps installation costs to a minimum, enabling easy maintenance and servicing.

Hygienic

Regular inspections of AHUs require absolute cleanliness. For this reason, when designing the RQM MultiEvo, we have taken care to ensure that the impeller is easy to clean via the guide vanes or the optional opening flaps. It can't be simpler.

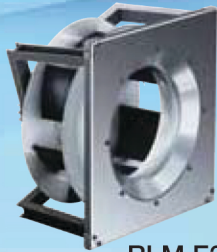
Product range

- Permanent Magnet motor to IE5
- Impeller sizes from 315 to 900 mm
- Motor output from 1.4 kW to 18 kW
- Maximum pressure up to 2000 Pa
- Air volumes up to 40.000 m³/h
- Integrated electronics

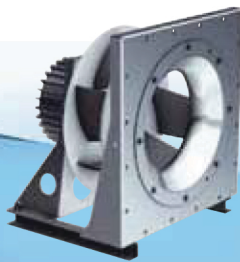


*System efficiency up to 78 % depending on the fan size.

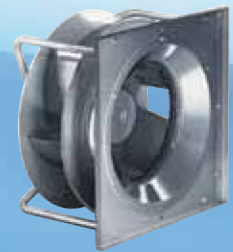
Other fans for climate control and ventilation technology



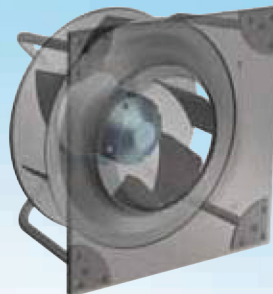
RLM E3
Controlled with frequency inverter
or fitted electronics



RLM E6
Controlled with frequency inverter
or fitted electronics



RLE E3/E6
Controlled with integrated electronics



PFP
Controlled with integrated electronics